

Stainless Steel Tanker Trailer

Manufactured with 316-stainless steel, these tankers provide a capacity of 6,500 gallons to most efficiently transfer your liquids. Our tanks meet DOT 407 specifications to ensure job safety. Mobile Mini Tank and Pump solutions stainless steel tanks come insulated or uninsulated with level indication and vapor recovery capability.



Dimensions and Weights

Capacity: 7000 gallons nominal

GCRW: 80,000 pounds

Length: 39' 6.23"

Height: 11' 5"

Axle and frame width: 71 1/2" track axle on a 38" wide, 1/4" thick stainless steel frame

Construction

Material: 10 gauge manufactured UNS S32205 duplex 2B finish on shell and heads

Insulation: 6" Fiberglass compressed to 5" with Roxul mineral wool jacket hold outs at jacket laps

Underlayment: 24" wide .080 aluminum underlayment on the top full length of trailer

Outlet

Outlet Valve: (1) 3" SS Betts QR713SST QRB hydrolat valve with 90 degree threaded outlet, pointed to rear

Outlet fittings: 3" SS cam style adapter and dust cap.

Emergency valve: (1) 4" x 3" x 90 degree SS Betts CH46955SST external chemical hydraulic valve, pointed to read

Sump: (1) 4" 2205 Duplex mounting pad integral with rear cross member

Venting and Heating

Pressure Relief: (1) 3" threaded Betts RVP3NT-30 pressure relief vent (30 PSI MAWP), with Teflon seals and wear components, on 3" threader nozzle located to the rear of each manhole

Vacuum Relief: (1) 3" Betts RRV3ST vacuum breaker with Teflon seals and wear components, and an air inlet and gause assembly, on 3" threaded nozzle located to the rear of each manhole

Vent Line: 1 3/4 SS vent line from spilldam to rear of tank curbside with SS ball valve and male camlock fitting

Vapor Recovery Valve: (1) 3" x 2" threaded Girard GVRA-BXT tee-style vapor recovery valve mounted on a 3" threaded nozzle to the rear of each manhole in spilldam. Vapor recovery valve operated by the hydraulic hand pump with an SS hydraulic line running up the side of the trailer.

Vapor Recovery Piping: Curbside run of tee for top connection with 2" threaded ball valve, camlock adapter and dust cap.

Heat: (3) full-length channels, 150psi design working pressure, designed for steam and in-transit heat with inlet and outlet at front, steam trap at rear

Feature

Manhole: 20" Diameter full opening Betts 8310-LC-W, 6 lug with white Hypalon gasket in cover

Ladder: 18" wide SS ladder with dimpled channel rungs, platform type top step, and grab handles at each top side. Located Curbside.

Hose Carrier: (2) 8" x 21" aluminum hose tube with doors each end

Overturn Protection: DOT overturn protection at ends of spilldam and beyond each cleanout

Hose Carrier: (2) 8" x 21" aluminum hose tube with doors each end

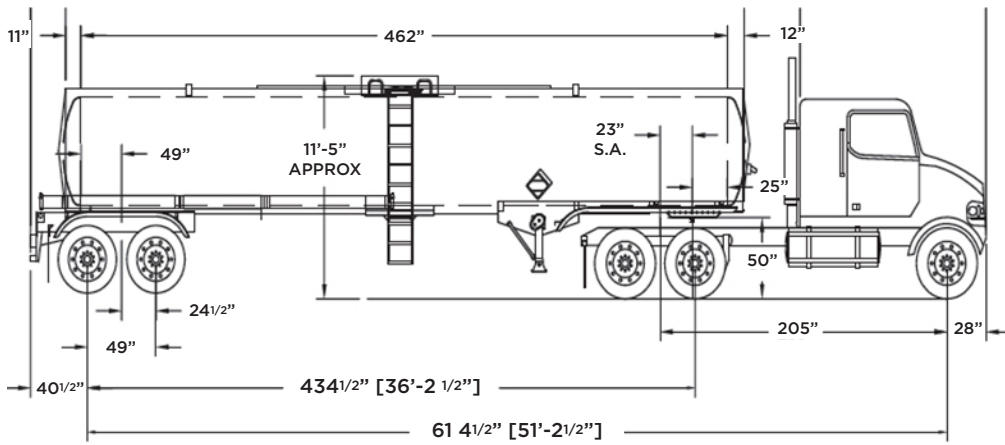
Thermometer: 0-250 degrees Fahrenheit clip-on type, located curbside eye level near center of tank

Capacity Indicator: (1) Garnet #8082 gauge, located on a 3" nozzle in Spilldam (gallons)

Cleanouts: (2) 3" 2205 Duplex Threaded nozzles in tank shell on top centerline with 19" wide walkway

**Photos are representational; actual products vary. Additional product plans and specifications may vary from those shown and are subject to in-stock availability.*

Tanker Trailer Drawing



**Some details not shown in all views. Overall dimensions are normal.*

**Photos are representational; actual products vary. Additional product plans and specifications may vary from those shown and are subject to in-stock availability.*

Side View (with Tractor)